

Regent Majorflow Pumps

Regent Majorflow pumps are Australian Made close coupled end suction centrifugal motor pumps. They are designed for a wide range of applications. They are supplied with non-overloading, totally enclosed fan cooled motors and feature a back pullout design for easy maintenance.

Regent Majorflow pumps feature a radial discharge giving a variety of discharge positions and reducing the need for some pipe fittings. Their radial discharge enables them to be easily used as replacement pumps for other radial discharge models. A mechanical seal is fitted as standard and can resist liquid temperatures up to 120°C. Specific seals can also be fitted for special applications.

These pumps are available in a variety of materials and are engineered to achieve reliable long life performance.

Design Features:

TEFC Motor

Electric motors are supplied standard as totally enclosed fan cooled to reduce motor condensation and provide sufficient cooling. Other motor enclosures are available.

Hi-Temp Seal

Shaft seal is a seal adjusting mechanical Crane type seal adequate for temperatures to 120°C - special seals may be supplied for special applications and temperatures.

Back Pull-out Design

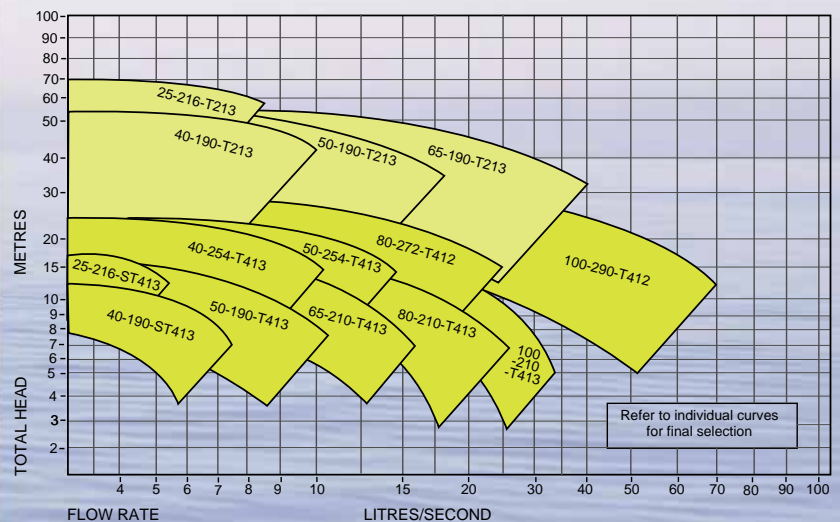
Allows the rotating element to be serviced without disturbing the pipework. Complete rotating element including motor may be withdrawn from rear without disturbing pipework.

Eight Position Discharge

The casing may be mounted in eight alternative discharge positions (standard supplied horizontally overshot).



Performance



Design

Backplate is a cast iron casting of adequate dimensions with machined spigot on mating face to ensure perfect alignment. Shrouded type impeller machined and balanced for smooth operation.

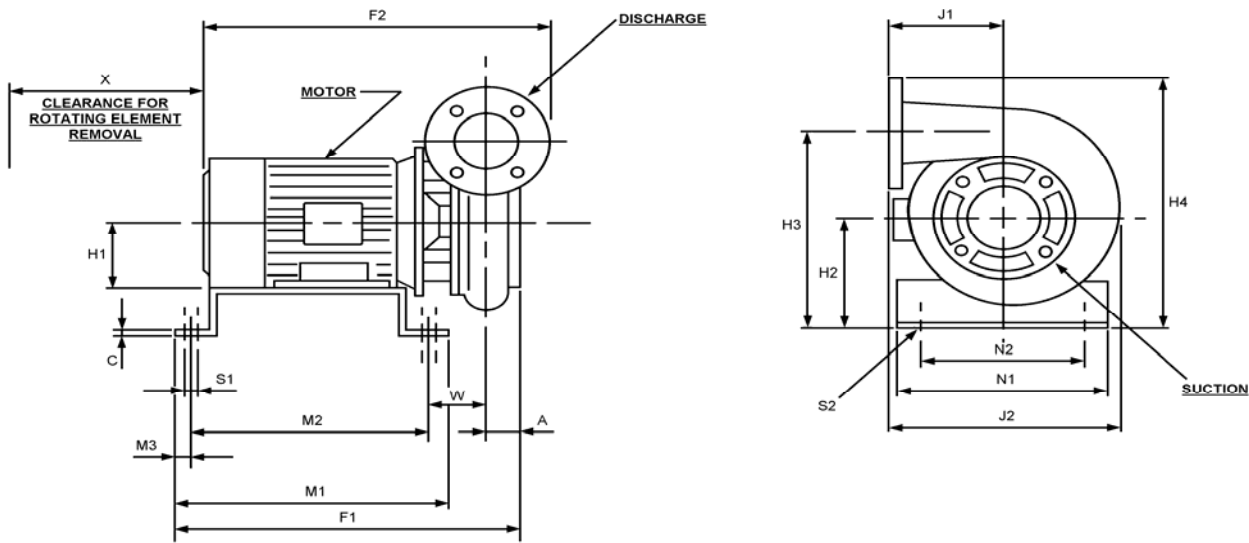
Materials:

Standard pump casing & backplate: close grained cast iron, Options Available: bronze, zinc free bronze or stainless steel. Impeller: bronze or zinc free bronze, Options Available: cast iron or stainless steel. Shaft: stainless steel. Seal: mechanical - carbon/ceramic mating faces, Options Available: special high temperature seals/seals for various liquids.

Applications:

- * Cooling Towers
- * Effluent
- * Hot Water Circulation
- * Fluid Transfer
- * Machine Cooling
- * Industrial Applications

FLANGED MAJORFLOW DIMENSIONS (Dimensions may change due to availability of motors. Do not scale).



| MODEL | MOTOR | A | C | F1 | F2 | H1 | H2 | H3 | H4 | J1 | J2 | M1 | M2 | M3 | N1 | N2 | S1 | S2 | W | X | IN-LET | OUT-LET | KG | | | | | | |
|---------|---------|----|---|-----|-----|-----|-----|-----|-----|-----|-----|-----|--------|----|-----|-----|----|-----|------|-----|--------|---------|-----|-----|-----|-----|-----|-----|-----|
| 65-142 | 5.5 -2P | 43 | 5 | 577 | 625 | 132 | 212 | 340 | 424 | 162 | 330 | 402 | 342 | 26 | 304 | 256 | 12 | M12 | 166 | 180 | 3" | 2 1/2" | 118 | | | | | | |
| 65-152 | 7.5 -2P | | | | 663 | | | | | | | | | | | | | | | | | | 120 | | | | | | |
| 65-161 | 10.0-2P | | | 624 | 733 | 160 | 260 | 388 | 472 | | | | | | | | | | | | | | 614 | 542 | 36 | 360 | 310 | -6* | 95 |
| 65-176 | 15.0-2P | | | 668 | 777 | 38 | 187 | | | | | | | | | | | | | | | | | | | | | | |
| 65-190 | 18.5-2P | | | 202 | | | | | | | | | | | | | | | | | | | | | | | | | |
| 65-195 | 2.2 -4P | 44 | 5 | 536 | 539 | 100 | 180 | 313 | 397 | 123 | 160 | 3" | 2 1/2" | 72 | | | | | | | | | | | | | | | |
| 65-210 | 3.0 -4P | 75 | | | | | | | | | | | | | | | | | | | | | | | | | | | |
| 80-190 | 2.2 -4P | 46 | 5 | 541 | 544 | 100 | 180 | 323 | 415 | 172 | 338 | 402 | 342 | 26 | 304 | 256 | 12 | M12 | 128 | 205 | 4" | 3" | 74 | | | | | | |
| 80-196 | 3.0 -4P | | | 548 | 563 | 112 | 192 | 335 | 427 | | | | | | | | | | | | | | 135 | 80 | | | | | |
| 80-210 | 4.0 -4P | | | 86 | | | | | | | | | | | | | | | | | | | | | | | | | |
| 80-247 | 5.5 -4P | 56 | 6 | 613 | 608 | 132 | 232 | 420 | 515 | 203 | 415 | 614 | 542 | 36 | 360 | 310 | 12 | M12 | -17* | 160 | 4" | 3" | 120 | | | | | | |
| 80-272 | 7.5 -4P | | | | 646 | | | | | | | | | | | | | | | | | | 134 | | | | | | |
| 100-173 | 2.2 -4P | 55 | 5 | 552 | 558 | 100 | 180 | 340 | 453 | 203 | 386 | 402 | 342 | 26 | 304 | 256 | 12 | M12 | 128 | 205 | 4" | 4" | 78 | | | | | | |
| 100-190 | 3.0 -4P | | | | | | | | | | | | | | | | | | | | | | 135 | 80 | | | | | |
| 100-210 | 4.0 -4P | | | | | | | | | | | | | | | | | | | | | | 559 | 577 | 112 | 192 | 352 | 465 | 135 |
| 100-209 | 5.5 -4P | 59 | 6 | 622 | 623 | 132 | 223 | 421 | 531 | 229 | 447 | 614 | 542 | 36 | 360 | 310 | 12 | M12 | 20 | 205 | 5" | 4" | 130 | | | | | | |
| 100-230 | 7.5 -4P | | | | 661 | | | | | | | | | | | | | | | | | | 140 | | | | | | |
| 100-256 | 11.0-4P | | | 650 | 731 | 160 | 260 | 458 | 568 | | | | | | | | | | | | | | 64 | 192 | | | | | |
| 100-272 | 15.0-4P | | | 694 | 775 | 58 | 212 | | | | | | | | | | | | | | | | | | | | | | |
| 100-290 | 18.5-4P | | | 688 | 794 | 180 | 280 | 478 | 588 | | | | | | | | | | | | | | 58 | 246 | | | | | |

SUCTION/DISCHARGE

2 1/2"

3"

4"

5"

FLANGE OD

165

185

215

255

PCD

127

146

178

210

HOLE SIZE X NUMBER (DISCHARGE ONLY)

M18 X 4

M18 X 4

M18 X 4

M18 X 8

HOLE SIZE X NUMBER (SUCTION ONLY)

5/8"bsw X 4

5/8"bsw X 4

5/8"bsw X 4

5/8"bsw X 8

* Center line of front mounting holes on pump base, sit out further than the center line of pump casing.